

BORDER BARRIERS

SAFETY BARRIER SYSTEMS

BBS Separator 55 & Mini Mesh

- Lightweight and easily assembled water fill barriers
- Ideal for use throughout city centre areas for vehicles and pedestrian safety
- A clear and visible delineation system, manufactured from UV stabilised polyethylene
- Interlinking units which enable straight or curve configurations
- Stackable for ease of transportation and storage

Barrier Specifications

Length: 1m
Width: 0.40m
Height: 0.55m
Weight Empty: 8kg
Weight Water Filled: 28kg



Available Tops

BBS Separator Mesh

Round top mesh panels – white powder coated as standard 0.55m high

BBS Separator 65 Barrier

Length: 1m, Width: 0.55m, Height: 0.65m,
Weight Empty: 10kg, Weight Water Filled: 50kg

BBS Separator 80 Barrier

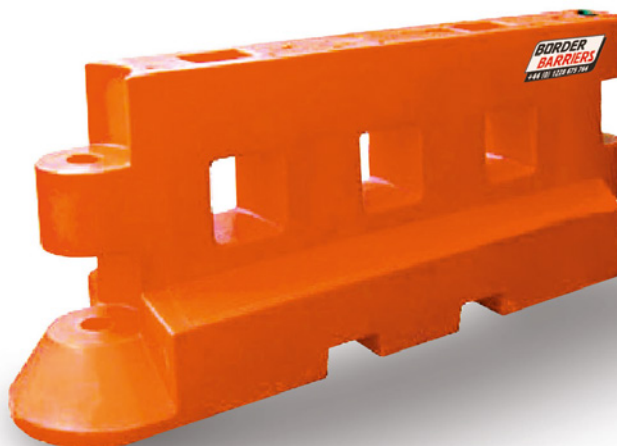
Length: 1.2m, Width: 0.40m, Height: 0.80m,
Weight Empty: 11kg, Weight Water Filled: 40kg

- Traffic Management ✓
- Streetworks and Pedestrian Safety ✓
- Safety and On-Site Security ✓
- Events and Festivals ✓

BBS Separator 90 Barrier

Suitable for a wide range of applications, from delineation to crowd control.

- Barriers manufactured from UV stabilised prime polyethylene
- Lightweight and easily assembled by 2 people
- Up to 200 metres per load
- Up to 35° configuration
- Hoarding or Mesh panels can be added for site security applications
- Suitable for a variety of applications from delineation to crowd control
- Panels supplied powder coated as standard, can be supplied in corporate colours
- MIRA wind tested, see our website for details



Barrier Specifications

Length: 2m ground coverage
Height: 0.87m
Base Width: 0.50m
Weight Empty: 36kg
Weight Water-Filled: 400kg
Mesh/Hoarding Panels: 1.35m high
Overall Height 2.22m

- Traffic Management ✓
- Streetworks and Pedestrian Safety ✓
- Safety and On-Site Security ✓
- Events and Festivals ✓